



Fact sheet

November 2010

The *Warren-Donnelly surface water allocation plan*: what it means and what next

Allocation planning in the Warren Donnelly: where we are at

Public submissions for the *Warren-Donnelly surface water allocation plan: for public comment* closed in September 2010.

We received 52 submissions, which have provided feedback on what stakeholders support and what they have issues with. We are taking on board the issues raised and are working hard to resolve them – by talking to local licence holders and making some adjustments to the plan.

We expect to finalise the plan after further stakeholder engagement in early 2011.

What the plan means for you and other licence holders

Our aim in the Warren-Donnelly area is to maximise the amount of water available for local development, without affecting supply to existing licence holders or the river environment.

Through the *Warren-Donnelly surface water allocation plan* we have set new allocation limits which allow a reliable water supply and in many areas more water is available for licensing.

If you are an existing licence holder, your entitlement is secure with a good reliability, especially given the drying climate.

If you are looking to access further water, licensing activity is now taking place again.

We will now continue with our licensing activity

In 2008, we had to stop water licensing because of a risk of over-allocation in some areas. Our decision was based on results from the Sustainable Diversion Limits study. The additional work we put into setting new allocation limits, results in good reliability and more water is available.

The new allocation limits provide a total of 54 GL/year for self-supply licence holders. Of this, 22 GL is still to be allocated.

The plan provides a total of 41.1 GL for the Warren and 13.2 GL for the Donnelly for self-supply water use, which, under the CSIRO's high-demand estimate, is more water than is needed for the next twenty years (CSIRO South-West WA Sustainable Yields project predicts 'high-demand' of 30.2 GL in the Warren basin and 9.6 GL in the Donnelly basin to 2030).

What your options are for obtaining more water

If you would like to expand existing or establish new operations, you can access water through:

- applying for a licence in an area where further water is available (see Figure 1)
- trading water with existing licence holders or
- looking into efficiency gains.

If you are seeking additional water in the Upper Lefroy, East Brook or Record Brook areas, water will need to be accessed through trades, efficiency gains or sourcing from other areas. In some situations, harvesting of high winter flows to off-stream storage may also be an option.

What next for allocation planning in the Warren-Donnelly?

1. Working with local licence holders

We are working to assist our licence holders to understand our reasoning behind the plan, how we have set allocation limits and where water is available for further licensing.

We are reviewing the comments received during our public comment period and will hold a number of additional meetings and workshops with local licence holders as we finalise our plan. Our statement of response, to be released with the final plan, will set out how we address each of the issues raised in the public comment period and stakeholder meetings.

2. Ensuring the plan has the right level of detail and the right information

Our focus is on producing the most accurate, transparent and usable allocation plan possible.

We are refining our plan and supporting documents to ensure that the messages and methods are clear and understandable. We will include further information in the plan and supporting documents, as requested in the submissions we received.

3. Adapting how we manage Warren-Donnelly surface water resources over time

Our focus is on providing secure and reliable water supply to licence holders by having the right allocation mechanisms in place, and adapting to changes in rainfall and water use over time.

Every year, we will evaluate the allocation plan to ensure we are meeting the objectives in the plan and that the objectives are still right for how to best allocate water and protect water supply for licence holders and the environment.

To cater for additional demand in fully allocated areas, we are also working with licence holders in the Upper Lefroy and East Brook assessing how future plans could allow for lower reliability water to be allocated in years with higher rainfall.

If appropriate, we will use this work and any other new information, to better refine water availability and our licensing approach in the future.

4. Applying water reform in the Warren-Donnelly area

Our focus is on water reform and applying the principles of the National Water Initiative in any area that we plan in, including the Warren-Donnelly.

Our work in ensuring that we allocate water to an appropriate level is part of meeting the National Water Initiative. The plan is set out as closely as possible to what will be required after water reforms.

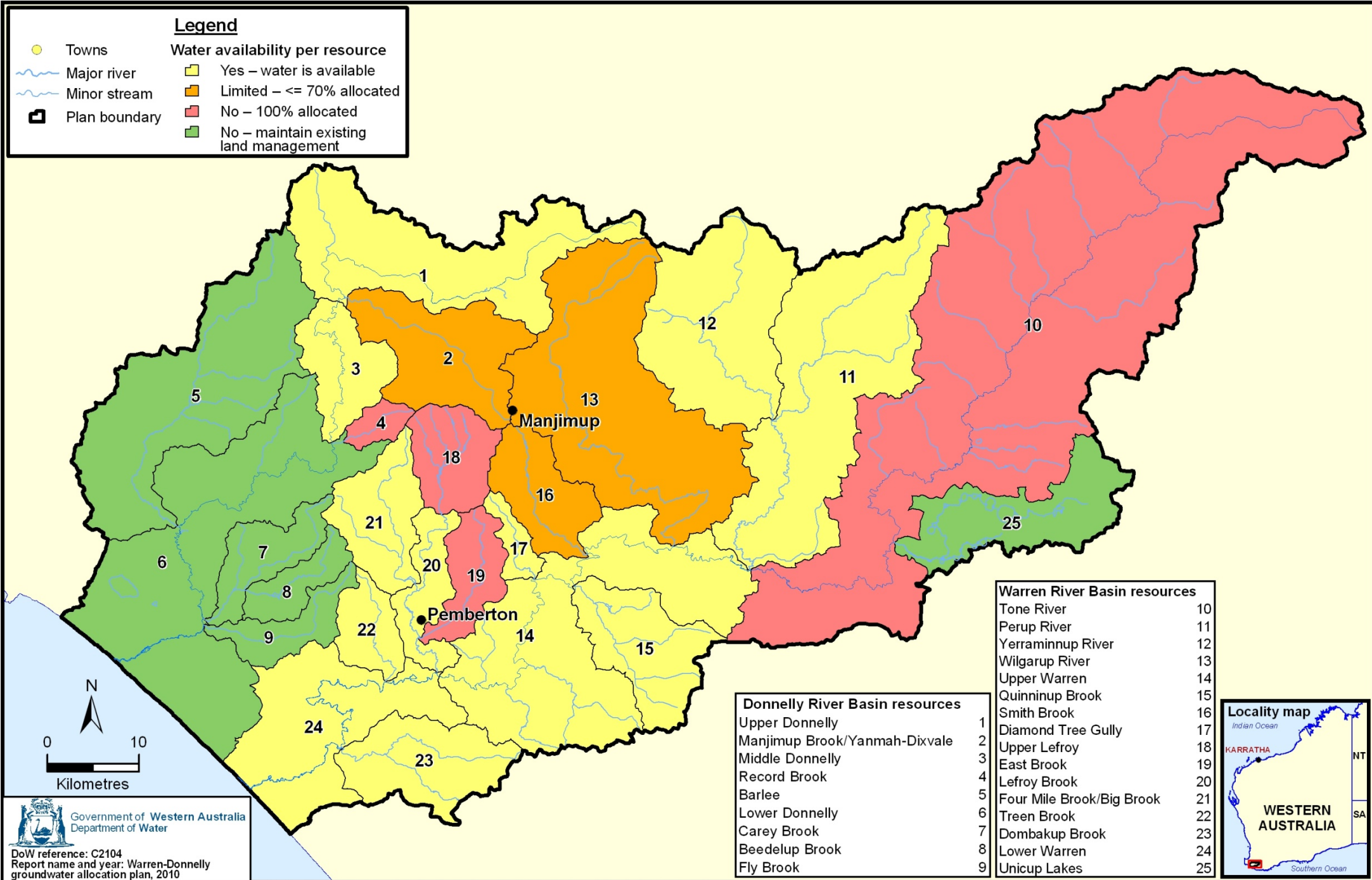


Figure 1 Availability of high reliability surface water for licensing in the Warren-Donnelly area