

Department of Water
Government of Western Australia



Department of Water
Government of Western Australia

> Protecting your drinking water

Drinking Water Source Protection Plans are developed by the Department of Water in consultation with your local community, stakeholders and local government.

Government bodies such as the Department of Health, and water service providers such as Water Corporation are also consulted.

Currently, more than 60 Drinking Water Source Protection Plans have been published for Public Drinking Water Source Areas throughout Western Australia. The Department of Water aims to publish a Protection Plan for all of the State's 139 drinking water source areas.

The support we receive from your local community, State and local government and other stakeholders, for both the preparation and implementation of these Protection Plans, will greatly assist in ensuring the availability of safe, good quality drinking water now and in the future.

> How to obtain a copy of the Harris Dam Protection Plan

If you would like to view this Protection Plan, please visit www.water.wa.gov.au and select 'Water quality', 'Publications', 'Plans and Assessments' — then scroll down to find the Harris Dam Catchment Area Plan. If you are unable to access the Internet, please call the Department of Water to arrange for a copy of the plan to be posted to you.

> Where can I get more information?

There are a range of other publications, such as Water Quality Protection Notes, policies and guidelines, which are produced by the Department's Water Source Protection staff.

To find out if your property is in the area covered by this Protection Plan please use the 'Geographic Data Atlas' found on the Department of Water website under 'Maps data and atlases' or contact the Department's Water Source Protection staff on (08) 6364 7600.

> Feedback

We welcome your comments and suggestions on this brochure and its associated Drinking Water Source Protection Plan.

Perth office:


168 St Georges Terrace, Perth, Western Australia 6000
Telephone: (08) 6364 7600. Facsimile: (08) 6364 7601
Email: drinkingwater@water.wa.gov.au

Regional office:

South West: 35-39 McCombe Street, Bunbury 6230
Telephone: (08) 9276 4111

www.water.wa.gov.au

Copies of this document can be made available in alternative formats if requested.

 Printed on recycled paper

Protecting your drinking water sources

Harris Dam Catchment Area

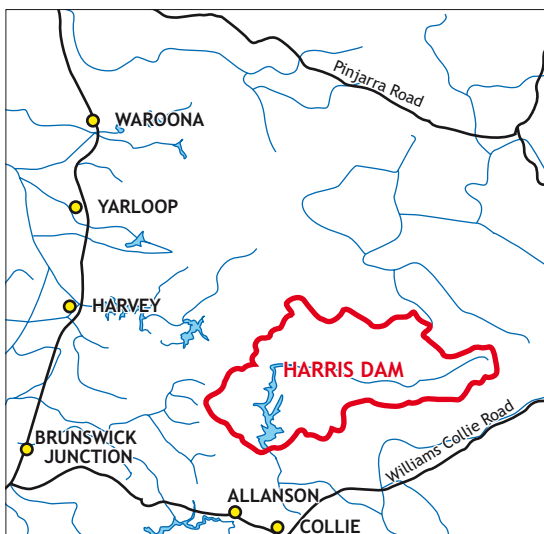


> Harris Dam Drinking Water Source Protection Plan

The Department of Water is responsible for protecting and managing drinking water catchments and water reserves in Western Australia. To do this, we develop and implement legislation, policies, plans, assessments, guidelines and informative brochures – to a large extent based on the Australian Drinking Water Guidelines. A risk-based multiple barrier approach underlies these guidelines. The first barrier is water source/catchment management and protection, with other barriers at the storage, treatment and distribution stages of water supply systems.

A Drinking Water Source Protection Plan has been developed for the Harris Dam Catchment Area. The risks to water quality have been identified with the community's help and management strategies recommended to tackle these risks (see the main risks outlined under 'Contamination').

> Am I in the Harris Dam Catchment Area?



> Land use

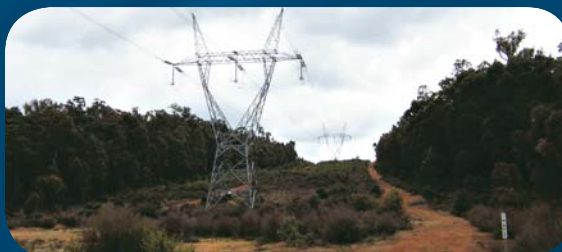
The main land uses in the Harris Dam Catchment Area include:

- State Forest and Lane Poole Reserve;
- Muja powerlines;
- Bauxite conveyor; and
- Bibbulman Track.



Importantly, all existing and legally established land uses will be able to continue. All land uses in the Catchment Area should adopt management practices that help to protect the quality of this drinking water source. New development or expansion of existing land uses should be guided by the Drinking Water Source Protection Plan's recommendations.

For more guidance on appropriate land uses please refer to the Water Quality Protection Note Land Use Compatibility in Public Drinking Water Source Areas, produced by this Department. To do this please visit www.water.wa.gov.au and select 'Water quality', 'Publications' and then 'Water Quality Protection Notes'. If you are unable to access the Internet please call the Department of Water to arrange for a copy of the note to be posted to you.



> Contamination

Drinking Water Source Protection Plans identify sources of potential water contamination. The main water quality risks for the Harris Dam Catchment Area include:

- Pathogens from illegal recreation such as swimming and marroning;
- Contamination from spills and leaks of fuels and other hydrocarbons/chemicals through illegal vehicle access; and
- Turbidity from erosion of roads and tracks.



All the potential contamination risks have been carefully assessed. Following this assessment, recommendations have been made that will provide for the long term protection of this vital water supply. The main recommendations include:

- Incorporation of the plan into the Shires of Collie, Harvey and Williams Town Planning Schemes - to ensure that future land uses within the Catchment Area are compatible;
- Investigating the closure of unnecessary roads and tracks, and gating of access to the reservoir; and
- Preparation of an implementation strategy.