



Summary of the Warren-Donnelly surface water allocation plan: for public comment

Why is the Department of Water developing an allocation plan for Warren-Donnelly surface water resources?

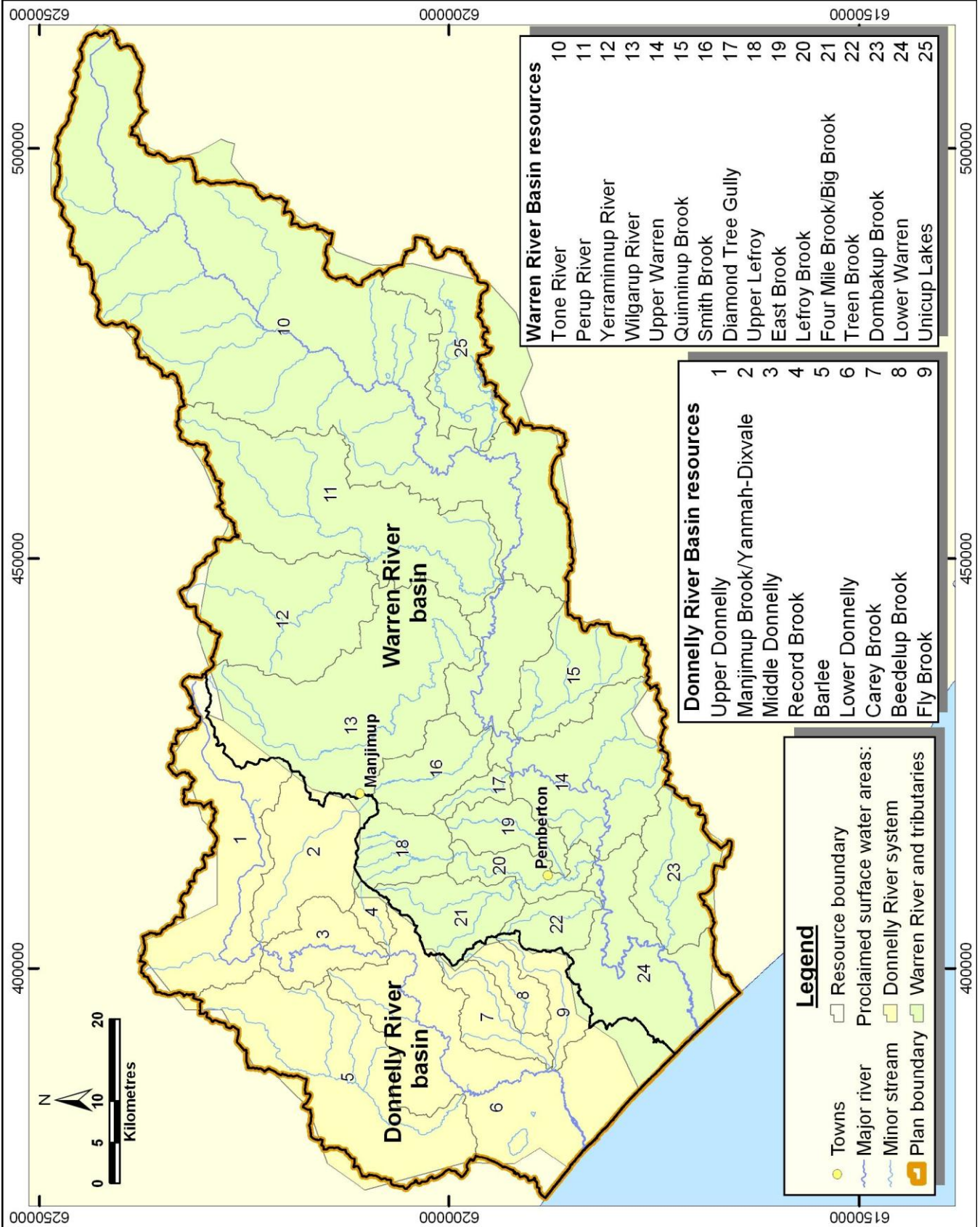
The department initiated allocation planning in the Warren-Donnelly area because information from a study on sustainable diversion limits indicated that some surface water resources may be fully or over-allocated. This meant that additional water use could affect the supply of water to existing users and the health of river ecosystems already under pressure from catchment clearing, salinisation, water abstraction and decreasing rainfall.

In 2008, to maintain sustainable use of surface water resources (Figure 1), the department announced interim allocation limits that effectively put licensing on hold in the highly developed areas.

What is the purpose of the plan?

The purpose of this plan is to set new allocation limits and to improve how we manage the allocation of surface water resources in the Warren-Donnelly area. The planning process has considered:

- new data from studies completed in 2009 that assessed the impact of current water use on river flow and identified the ecologically sustainable yields of rivers in the South West region
- the large number of on-stream farm dams, the total volume of streamflow being captured annually by these dams and results of farm dam mapping
- the impact of further allocations on existing water users, the environment and salinity in the Warren River Basin.



Warren River Basin resources	
10	Tone River
11	Perup River
12	Yerraminup River
13	Wilgarup River
14	Upper Warren
15	Quinninup Brook
16	Smith Brook
17	Diamond Tree Gully
18	Upper Lefroy
19	East Brook
20	Lefroy Brook
21	Four Mile Brook/Big Brook
22	Treen Brook
23	Dombakup Brook
24	Lower Warren
25	Unicup Lakes

Donnelly River Basin resources	
1	Upper Donnelly
2	Manjimup Brook/Yanmah-Dixvale
3	Middle Donnelly
4	Record Brook
5	Barlee
6	Lower Donnelly
7	Carey Brook
8	Beedelup Brook
9	Fly Brook

Legend	
	Towns
	Resource boundary
	Major river
	Minor stream
	Plan boundary
	Proclaimed surface water areas:
	Donnelly River system
	Warren River and tributaries



Government of Western Australia
Department of Water

This map is a product of the Department of Water, Water Resource Use Division and was printed on April 2010.

While the department has made all reasonable efforts to ensure the accuracy of this data, the department accepts no responsibility for any inaccuracies and persons relying on this data do so at their own risk.

Sources

The Department of Water acknowledges the following datasets and their custodians in the production of this map:

Western Australia Towns – DLI – 2003
Hydrography, Linear (Hierarchy) – DoW – 06/06/06
Surface Water Management Subareas – DoW – 27/02/09
680424 Warren_Donnelly plan area – DoW – 24/04/09
R1M1 Act, Surface Water Areas and Irrigation Districts – DoW – 05/11/08
WA Coastline – DoW – 20/07/06

Datum and projection information

Vertical datum: AHD
Horizontal datum: GDA 94
Projection: MGA 94 Zone 50
Spheroid: Australian National Spheroid

Map author: E Said / B Huntley
Filepath: J:\Gis_Projects\projects\Project\series\C2101\0004.mxd
Filename: 100226 Warren Donnelly subareas_Figure 2.mxd
Compilation date: March 2010
Edition: 1.3

Figure 1 Surface water resources in the Warren and Donnelly river basins

What does the plan include?

The plan sets out:

- how much surface water can be allocated
- whether water is available
- how the department will allocate and manage surface water in the area
- water resource and water use management objectives
- how the department will implement, evaluate and review the plan over time.

What are the allocation limits for surface water resources in the Warren-Donnelly area?

Allocation limits are the annual volume of water set aside for consumptive use from a water resource. This includes water available for licensing and water for uses exempt from licensing.

For detail on the methodology and information we used to set allocation limits see the department's *Warren-Donnelly surface water allocation limits report*.

Allocation limits and the status of water availability for licensing are presented in Table 1 for each of the 25 surface water resources in the Warren-Donnelly area (Figure 1).

Please contact our Manjimup office on 08 9771 1878 for up-to-date information on the volume of water available for future use. Once a resource is fully allocated, the department will refuse applications for new (or increases to) surface water entitlements.

Where is water available in the Warren-Donnelly area?

The Donnelly River Basin is divided into nine surface water resources (areas). Limited water is available for licensing in those surface water resources with agricultural development. Water has been set aside for small scale stock and domestic water use, which is exempt from licensing.

There are 16 surface water resources in the Warren River Basin. Water is still available for licensing in some surface water resources.

No more water is available in the Tone River, Upper Lefroy, East Brook and Unicup Lakes resources. Water has been set aside in all resources for small scale stock and domestic water use, which is exempt from licensing.



Table 1 Allocation limit, components of the allocation limit and resource status for each surface water resource

Resource	Allocation limit ML/yr	Allocation limit components ML/yr				Status of water availability for licensing ¹ (as at June 2010)
		Licensable		Unlicensable	Reserved water	
		General licensing	Public water supply	Unlicensed use	Public water supply	
Warren River and tributaries surface water area						
Tone River	55	50	0	5	0	No water available
Perup River	1 571	1 434	0	138	0	Water available
Yerraminnup River	124	113	0	11	0	Water available
Wilgarup River	8 027	7 350	0	677	0	Limited water available
Upper Warren	4 368	3 484	0	384	500	Water available
Quinninup Brook	1 422	1 267	30	125	0	Water available
Smith Brook	4 362	3 745	0	617	0	Limited water available
Diamond Tree Gully	682	623	0	59	0	Water available
Upper Lefroy	6 975	5 581	894	500	0	No water available
East Brook	3 627	3 258	0	370	0	No water available
Lefroy Brook	2 905	2 108	450	347	0	Water available
Four Mile Brook/ Big Brook	5 294	4 505	450	290	50	Water available
Treen Brook	2 570	2 345	0	225	0	Water available
Dombakup Brook	3 783	3 443	0	339	0	Water available

¹ Please contact our Manjimup office on 08 9771 1878 for up-to-date information on the volume of water available for future use. Resource status indicates how much of the water available for general licensing has been allocated and whether water is available for new licences. Water available means < 70 per cent has been allocated and limited water available means 70 to 100 per cent has been allocated..



Resource	Allocation limit ML/yr	Allocation limit components ML/yr				Status of water availability for licensing ¹ (as at June 2010)
		Licensable		Unlicensable	Reserved water	
		General licensing	Public water supply	Unlicensed use	Public water supply	
Lower Warren	1 965	1 790	0	174	0	Water available
Unicup Lakes ²	0	0	0	0	0	No water available
Warren totals	47 730	41 096	1824	4260	550	
Donnelly River System surface water area						
Upper Donnelly	3 906	3 558	0	349	0	Water available
Manjimup Brook/ Yanmah-Dixvale	6 441	5 900	0	541	0	Limited water available
Middle Donnelly	2 366	2 162	0	204	0	Water available
Record Brook	500	0	0	0	500	No water available
Barlee	0	0	0	0	0	No water available
Lower Donnelly	14	13	0	1	0	No water available
Carey Brook	0	0	0	0	0	No water available
Beedelup Brook	806	739	0	67	0	No water available
Fly Brook	867	795	0	72	0	No water available
Donnelly totals	14 900	13 166	0	1233	500	

² The Unicup Lakes resource is proclaimed under the Warren River and tributaries surface water area but is within the Muir-Unicup surface water allocation area (water resource database information). The allocation limit was set at current use (0) to help protect the environment.



How can you have your say?

Your comments can help us improve this plan. We will review and consider your comments before finalising the *Warren-Donnelly surface water allocation plan*. Along with the final plan, we will produce a statement of response to summarise comments and our responses to them. Please state clearly if you do not wish us to quote directly from your comments.

Please send your comments by COB 6 September 2010 to:
<allocation.planning@water.wa.gov.au>

or post to:

South West Region
Department of Water
PO Box 261
Bunbury WA 6231

(if mailing, please write 'Allocation plan submission' on the envelope)

