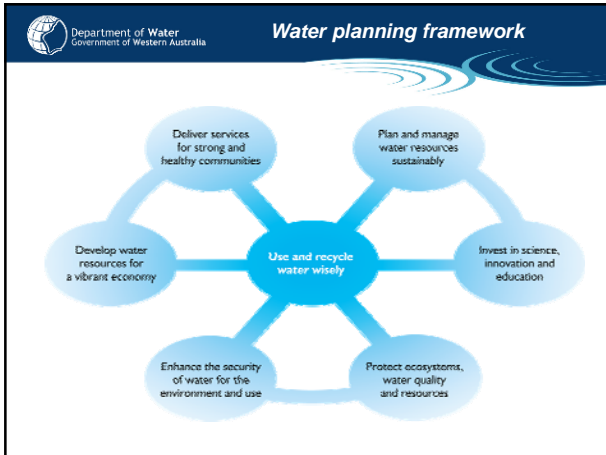
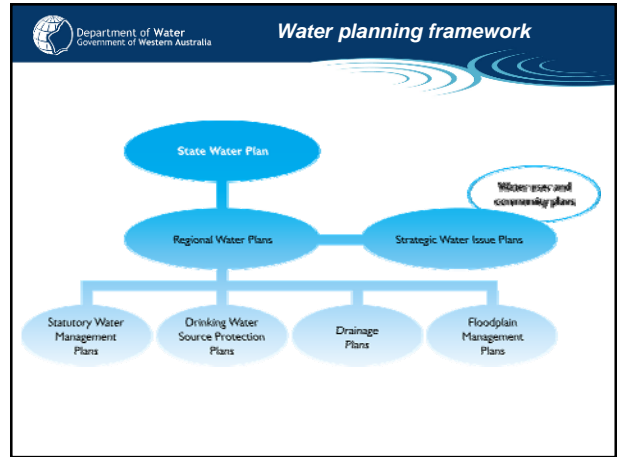


Department of Water
Government of Western Australia

Planning For The Future

Ed Hauck
Manager Strategic Water Planning

State Water Forum
1 August 2007



Department of Water
Government of Western Australia

Regional water planning

Regional Water Plans

Under development:

- South West (late 2007)
- Pilbara (mid 2008)
- Perth-Peel (late 2008)

Next:

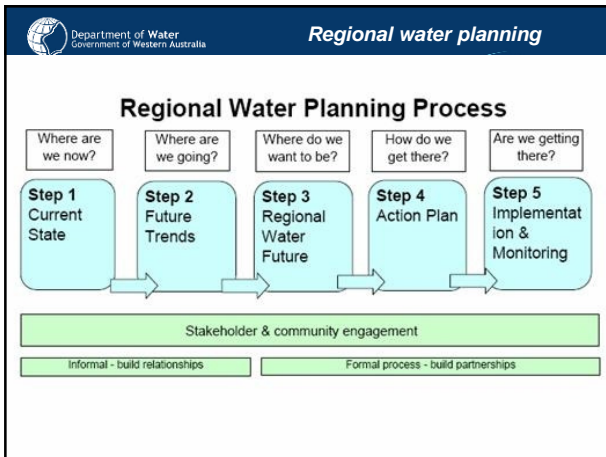
- Mid West
- Great Southern
- Kimberley

Then:

- Goldfields - Esperance
- Wheatbelt
- Gascoyne

Also:

- Gnamptara Sustainability Strategy



Department of Water
Government of Western Australia

SW Regional Water Plan

Objectives

- Assess the current state and future trends of water resources and services
- Identify current and future water availability and demand
- Establish key policy directions
- Determine priority actions to support policy implementation and planning

Department of Water
Government of Western Australia

SW Regional Water Plan

Stakeholder Engagement Strategies

- Early, targeted involvement of key stakeholders
- Inter-agency involvement and contributions
- Two phases of wider community consultation
- On-going monitoring of actions

Department of Water
Government of Western Australia

SW Regional Water Plan

Key issues identified

| Ranking | Issue | Category |
|---------|---|-------------------------|
| 1 | Water re-cycling and re-use | Social and economic |
| 2 | Quantifying impacts of climate change on water | Science and technical |
| 3 | Scientific support for sustainable yields | Science and technical |
| 4 | Inclusion of environmental water needs in planning | Management and planning |
| 5 | Information about impacts of plantations | Science and technical |
| 6 | Salinity of river systems | Environmental |
| 7 | Water efficiency for agriculture | Social and economic |
| 8 | Modifications of river (dams, drainage lines, levees etc) | Environmental |
| 9 | Future availability of surface water | Management and planning |
| 10 | Future availability of groundwater | Management and planning |

Department of Water
Government of Western Australia

SW Regional Water Plan

Key Themes for Action

- Use water wisely
- Understanding our water resources
- Work in partnerships with community and stakeholders
- Plan for the future

Department of Water
Government of Western Australia

Planning Framework

Adaptive management approach

Department of Water
Government of Western Australia

Be Bold !

- From linear science to complex dynamic systems thinking
- From reliance on the measurable to increased appreciation for social values and processes
- From technocratic 'decide and defend' to increased community engagement that informs deliberation on tradeoffs, especially when dealing with complexity and uncertainty
- From conservation of "museum pieces" to adaptive management that also incorporate 'no regrets policies'
- From 'selling' the solution to asking the right questions
- From silver bullets to a portfolio of options

Department of Water
Government of Western Australia

Thank You

www.water.wa.gov.au

ed.hauck@water.wa.gov.au